

(No model.)

W. STRANDERS.

BUILDING TOY.

No. 311,793.

Patented Feb. 3, 1885.

Fig. 1.

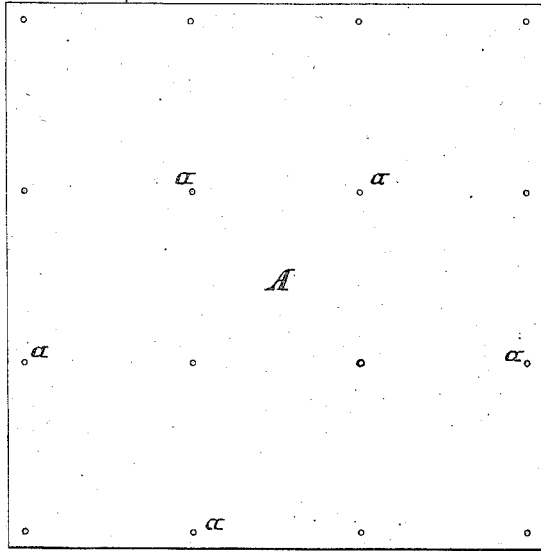


Fig. 4.

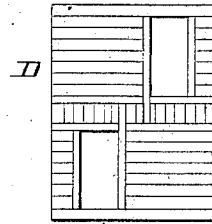


Fig. 6.



Fig. 5.

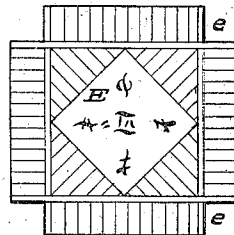


Fig. 2.

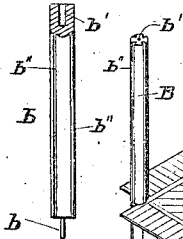


Fig. 7.

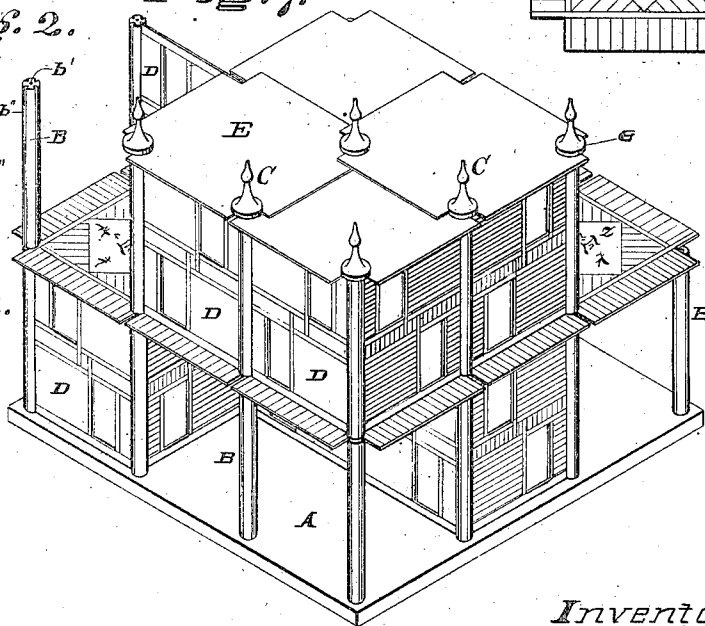
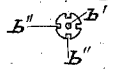


Fig. 3.



Attest:
A. P. Knight
Geo. Wheelock.

Inventor:
Walter Stranders
By Knight Bros
Atty

UNITED STATES PATENT OFFICE.

WALTER STRANDERS, OF NEW YORK, N. Y., ASSIGNOR TO PETER G. THOMSON, OF CINCINNATI, OHIO.

BUILDING-TOY.

SPECIFICATION forming part of Letters Patent No. 311,793, dated February 3, 1885.

Application filed July 18, 1884. (No model.)

To all whom it may concern:

Be it known that I, WALTER STRANDERS, of the city of New York, in the county and State of New York, have invented a new and useful Building-Toy, of which the following is a specification.

My toy consists, essentially, of a base board which has several equidistant pits or holes to receive the doweled ends of posts or columns, the opposite end of each of which has a corresponding socket for a similar dowel, and of which each post has four equidistant longitudinal grooves to receive partitions that are carved or painted to simulate the details of a house-front, such as weather-boarding, doors, windows, &c. Other boards are provided to represent floors, roof-pieces, &c., and any desired number of additional posts, partitions, &c., to represent additional flats, stories, porches, &c. Doweled finials inserted in the post-sockets of the (for the time being) upper most tier serve to hold the roof-pieces in place, and also to impart an attractive finish.

In the accompanying drawings, Figure 1 is a plan of a base-board such as used by me. Figs. 2 and 3 are respectively a side view and an end view of a post. Fig. 4 represents a partition. Fig. 5 represents a floor or roof piece. Fig. 6 represents a finial. Fig. 7 represents one of a great variety of pleasing and instructive structures capable of being produced by different arrangements of the few simple pieces mentioned.

A represents a wooden board, which may

have the square form here shown, and which has arranged in equidistant lines several holes or pits, *a*, to receive dowels *b* of posts B. Each post has a corresponding orifice or socket, *b'*, in its other end, to receive a like dowel projection either from a similar post or from one of a number of finials, C. Each post has four equidistant longitudinal grooves, *b''*, to receive the edges of wall-pieces or partitions D.

E represents floor or roof pieces, which, at their indented angles *e*, rest on posts B as said, and are secured in place either by superimposed posts or by said finials C, as the case may be. Said finials have for this purpose dowels *c*, that, being inserted in the notches *e* of said pieces E, fit tightly in any one of the post-sockets.

I claim as new and of my invention—

The building-toy consisting of a base-board, A, having the several holes or pits *a*, a corresponding set of posts, B, having at one end a dowel, *b*, to occupy any hole *a* in said board, and in its other end a corresponding socket, *b'*, and in its sides four equidistant longitudinal grooves, *b''*, for partitions D, the same being combined with a series of notched floor and roof pieces, E, and of doweled finials C, substantially as set forth.

In testimony of which invention I hereunto set my hand.

WALTER STRANDERS.

Attest:

GEO. T. PINCKNEY,
WILLIAM G. MOTT.